

Who we are

METRICA S.A. is based on the knowledge and technical expertise of its personnel, that has been in the field for more than 20 years. From best-in-class surveying & environmental instruments to the broadest solution portfolio in the measurement world, METRICA S.A. is helping customers to understand, plan and implement solutions for simple, complex or unique applications related to Surveying, Heavy Industry, Shipping and the Environmental sector.

The team

We are a professional surveying team with a primary focus on 3D laser scanning and industrial metrology. Based in Athens, Greece, we operate **worldwide** with vast experience over a diverse range of applications. Our products and services are suitable for industrial and marine sites, shipyards and offshore installations, architecture, heritage, and large-scale urban projects.



Metrology Services

Marine / Offshore

Contact us

88A Ginossati st., P.S.14452, Metamorphosis, Greece
info@metrica.gr | www.metrica-isv.gr
T. +30 2102815440



We are certified with ISO 9001:2015 and Environmental ISO 14001:2015.
We guarantee the security and confidentiality of our client's data.



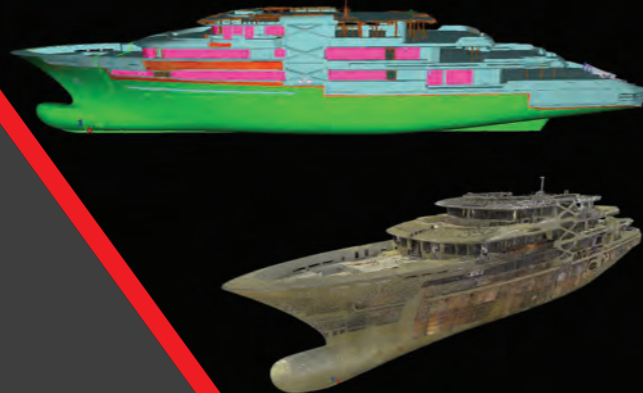
www.metrica-isv.gr

Services

Combining advanced technology solutions, years of experience & innovative methodology, METRICA offers turn-key solutions to its customers.

3D Scanning

In naval architecture and marine engineering, 3D documentation is critical for the design, construction, inspection, repair and installation of various onboard systems. Digital Surveys (3D laser scanning / CAD modeling) capture and deliver, very quickly, the complex geometries and shapes of boat hulls as also unapproachable and impacted areas for claiming and redesign. Our team uses the most advanced 3D metrology laser scanners with unsurpassed speed, accuracy, and range for demanding scanning projects. Our experienced engineers accomplish these projects in the most efficient & professional way.



Dimensional Analysis & QC

During its lifetime, a ship may encounter accidents, such as collision and grounding, which lead to the threat to human life, the pollution of the environment, and economic losses. Determining the root causes of such events is essential to implement corrective actions, prevent further failure, and improve overall safety. METRICA implements geometrical inspection and assessment of the damaged structures, provides the necessary data (as-built design etc.), monitors the repair process and verifies that everything is consistent with the initial plan.

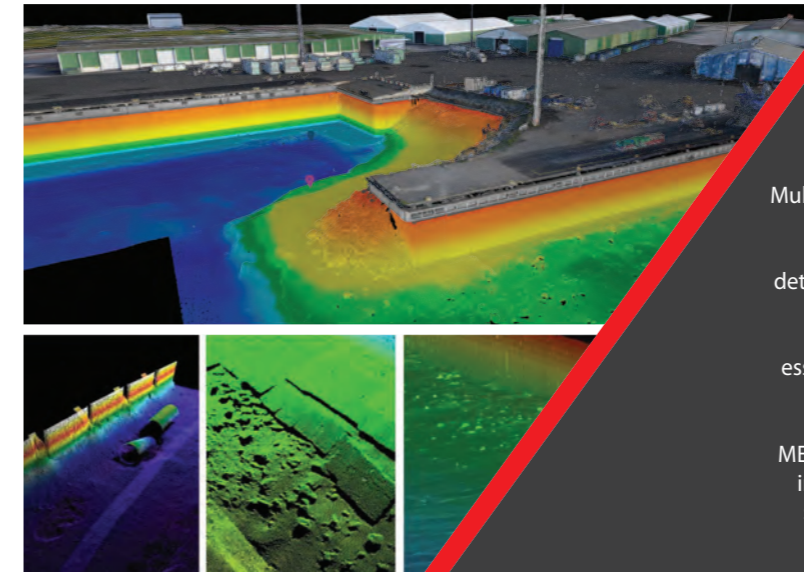
Machine Alignment

Misalignment issues often result in the late delivery of newbuilds and costly, time-consuming repairs for ships in operation. METRICA is your trusted partner for obtaining a precise shaft alignment, ensuring safe and reliable operation.

We have experience from several troubleshooting projects checking the alignment of different marine propulsion systems, such as propeller shaft, stern tube, marine engine, straightness/flatness checks etc. Inspection services apply for the construction of new ships and maintenance work.



Contact our experts to discuss your needs and decide on the most efficient way to accomplish your project.



Multibeam Surveys

Multibeam Echo Sounder is a state-of-the-art technology for accurate seafloor surveys. Shoreline and port infrastructures can be documented by ensuring the detailed collection of bathymetric data, geomorphology, and backscatter information.

Bathymetric diagrams and 3D deliverables are the essential tools for the preventive maintenance of critical infrastructures, dredging and construction planning, under keel clearance surveys and academic research. METRICA provides hydrographic services for any marine, industrial, energy or port authority that meet even the strictest classes of internationally accepted standards.

Our services

3D Scanning

- Surveys for Ballast Water Treatment and Scrubber Installations
- As-Built Naval Lines Extraction
- As-Built surveys for retrofit design
- Interior Design
- Geometric Documentations for Claim Reports
- Deflections from Design
- Design Drawings
- Quality Control of fabricated parts and assemblies
- 3D Modeling and Reverse engineering of production components
- Mechanical and Pipe network design
- Sounding Tables Reports
- Surveying of hazardous areas

Dimensional Measurements & Quality Control

- Draught Marks and Decoration Lines Marking
- Navigation Aids Installation
- Geometric Documentation
- Deformation Monitoring
- Dry Docking Measurement Support
- Dimensional Control Surveys
- Military Sensors and Installations Support
- Geometric Inspection of Cranes and Installation Support
- Scientific Projects

Machine Alignment

- Support for propulsion systems installations (v-bracket, stern tube, trust-bearing, gearbox, engine)
- Crank bearing journal pockets of the bedplate alignment inspection
- Shaft alignment
- Line bore measurements
- Coupling Alignment
- Geometric Alignment (Parallelism, Straightness, Squareness, Level, Flatness, Perpendicularity, Concentricity, Parallelism)
- Vibration Inspections
- Horizontal and Vertical Alignment
- Turbine cell/bearing alignment inspection/correction

Multibeam Surveys

- Bathymetric Surveys for Port and Coastal Infrastructures
- Bathymetric Surveys for Pipe Inspection and Installation
- Hydropower Plant Reservoir Surveys
- Dredging Support
- ROV Inspections for Underwater Infrastructures

Responsive, Innovative & Professional

- We use state of the art equipment
- We offer customized solutions
- Team of experienced & well-trained engineers
- We develop innovations (R.I.C.)
- We offer a comprehensive customer support
- We operate worldwide
- We have an extensive customer list

